

That's an error.

That's all we know.







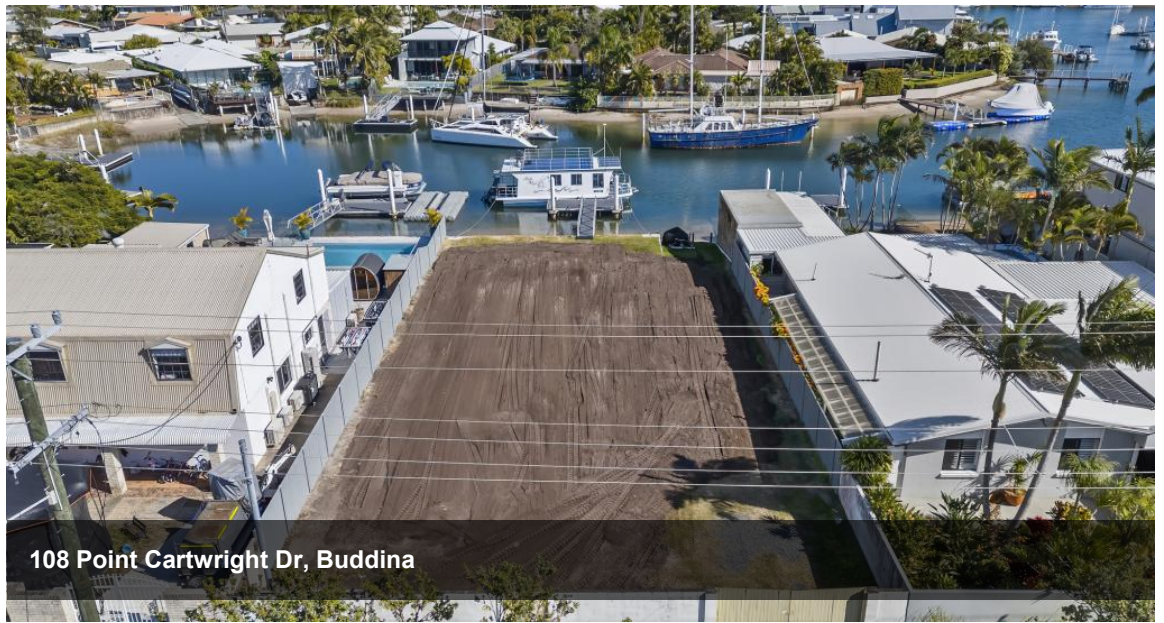












108 Point Cartwright Dr, Buddina



## WATERFRONT LAND WITH DEEPWATER ACCESS

Awaiting... family home. Ready to build on fully fenced, flat, level rectangle block. 18.1m width x 40.2m length on 728m<sup>2</sup> with deep water access to the Mooloolaba Harbour and the Pacific Ocean.

A rare opportunity awaits an astute buyer to get into the very tightly held Buddina canal front and call it their very own. Enjoy 18.1m of absolute canal frontage complemented by the recently fully renovated pontoon and gangway allowing for the largest of boats. The brand new concrete boat ramp makes it easier to access the water too. Just imaging living at this location, the lifestyle possibilities are truly endless.

All of following is within a 5-10mins walk - the patrolled beach, La Balsa Park, surf club, shopping center, dining precinct, cinemas, school, and marina. It is also close to the University Hospital and Airport.

Land on the canal front being scarcer than hen's teeth, build your dream home now or landbank for the future. With so much potential on offer this block needs to be inspected now to be appreciated.

Please call Dru on 0414 319 022 for more information.

*The above information provided has been furnished to us by the vendor/s. We have not verified whether or not that information is accurate and do not have any belief in one way or the other in its accuracy. We do not accept any responsibility to any person for its accuracy and do no more than pass it on. All interested parties should make and rely upon their own inquiries in order to determine whether or not this information is in fact accurate.*

728 m2

<b>Price</b>	For Sale
<b>Property Type</b>	Residential
<b>Property ID</b>	10864
<b>Land Area</b>	728 m2

### AGENT DETAILS

Dru Candappa - 0414 319 022

### OFFICE DETAILS

Mooloolaba  
Unit 1 24 Brisbane Rd Mooloolaba,  
QLD, 4557 Australia  
0754456500

