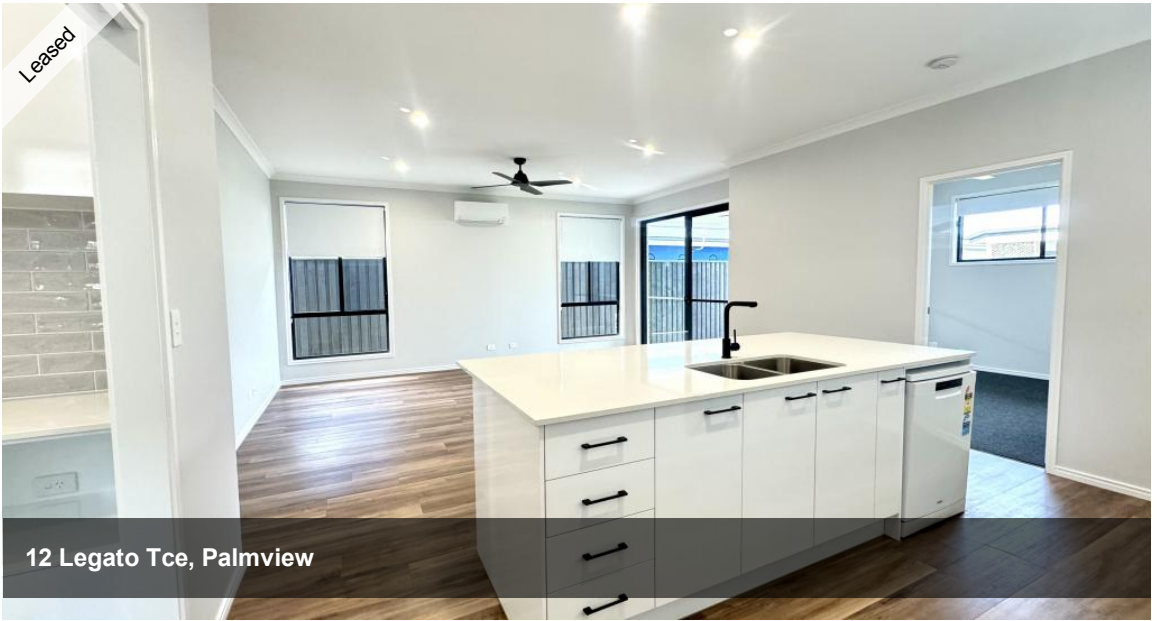


That's an error.

That's all we know.



12 Legato Tce, Palmview



NEWLY BUILT HOME WITH STUNNING FINISHES & LARGE BACKYARD!

Situated next to the new display village, this modern family home has an abundance of features to suit all of your needs!

Walk through the front door of this home and you will find open-plan living at its finest, featuring a well-appointed kitchen with 20mm stone benchtops, a butler's pantry, and plenty of storage.

The spacious backyard space & undercover alfresco are an entertainer or family's delight!

Home Specs:

- Impressive 2.7m Ceilings throughout
- 3 Bedroom Home - Master with ensuite & walk-in robe
- Split system air conditioning throughout
- fully fenced back yard with dual side access gates
- Single lock up garage with remote & internal access, room for 1 off-street car space on driveway also
- Internal Laundry
- Soft Close Drawers throughout
- Low maintenance gardens
- Timber floorboards

Located in the latest stage of the award winning Harmony estate in close proximity to large parks, sports fields, Aussie World, Cafes & Pub.

Within 2 minutes of the new Bruce highway access & Palmview State School.

Only a 10 minute drive to Sunshine Coast University, 20 minutes to Australia Zoo & 15 Minutes some of Australia's best beaches!

3 2 2

Price \$700p.w ONO
Property Type Rental
Property ID 10876

AGENT DETAILS

Blue Moon Property Management -
 07 5445 6500

OFFICE DETAILS

Sippy Downs
 Shop 2B/1 Chancellor Village
 Boulevard Sippy Downs, QLD, 4556
 Australia
 07 5445 6500



AVAILABLE NOW!

*For any further information or to arrange an inspection of this home please submit an enquiry.

The above information provided has been furnished to us by the vendor/s. We have not verified whether or not that information is accurate and do not have any belief in one way or the other in its accuracy. We do not accept any responsibility to any person for its accuracy and do no more than pass it on. All interested parties should make and rely upon their own inquiries in order to determine whether or not this information is in fact accurate.