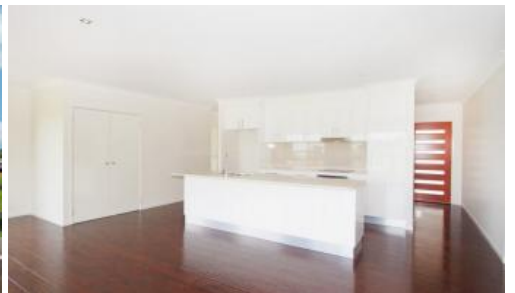


Sold



27 Moss Day Place, Burnside



## BRAND NEW HOUSE & LAND IN "THE HEIGHTS ESTATE"

All government grants and stamp duty exemptions apply. The "Heights Estate" is well known by the local as the premier location to live. This immaculate 3 bedroom (plus en-suite) home located in one of Nambour's newest estates and literally minutes from Nambour's CBD, primary & high schools. This superb home is built by the award winning Dan Thompson Builders. Complete with quality fixtures throughout and positioned in a quiet cul-de-sac street. Offering all the features and comforts you would expect with stylish modern kitchen, huge family room, large en-suite, undercover outdoor entertainment and stunning views.

- 3 Spacious bedrooms plus en-suite, built-in wardrobes
- Large living area leading out to the hardwood timber deck
- Intelligently designed two pac kitchen with soft closing drawers
- Quality fixtures, ceiling fans in all bedrooms, large H/W system
- Double remote controlled garage plus parking bay
- Fully fenced backyard – 634m2 block
- Quiet cul-de-sac with no through traffic
- Close to town centre & medical facilities

This property is definitely the right choice for a growing family that demands high standards and is an equally good rental investment with many Qld health staff requiring quality accommodation close to the hospital. Book it in for Saturday.

🏠 3 🛏 2 🚗 3 📏 634 m2

Price	SOLD
Property Type	Residential
Property ID	1442
Land Area	634 m2

### AGENT DETAILS

Stephen Colasimone - 0413 416 952

### OFFICE DETAILS

Sippy Downs  
Shop 2B/1 Chancellor Village  
Boulevard Sippy Downs, QLD, 4556  
Australia  
07 5445 6500



*The above information provided has been furnished to us by the vendor/s. We have not verified whether or not that information is accurate and do not have any belief in one way or the other in its accuracy. We do not accept any responsibility to any person for its accuracy and do no more than pass it on. All interested parties should make and rely upon their own inquiries in order to determine whether or not this information is in fact accurate.*