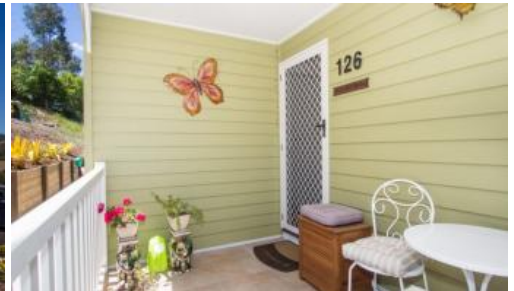
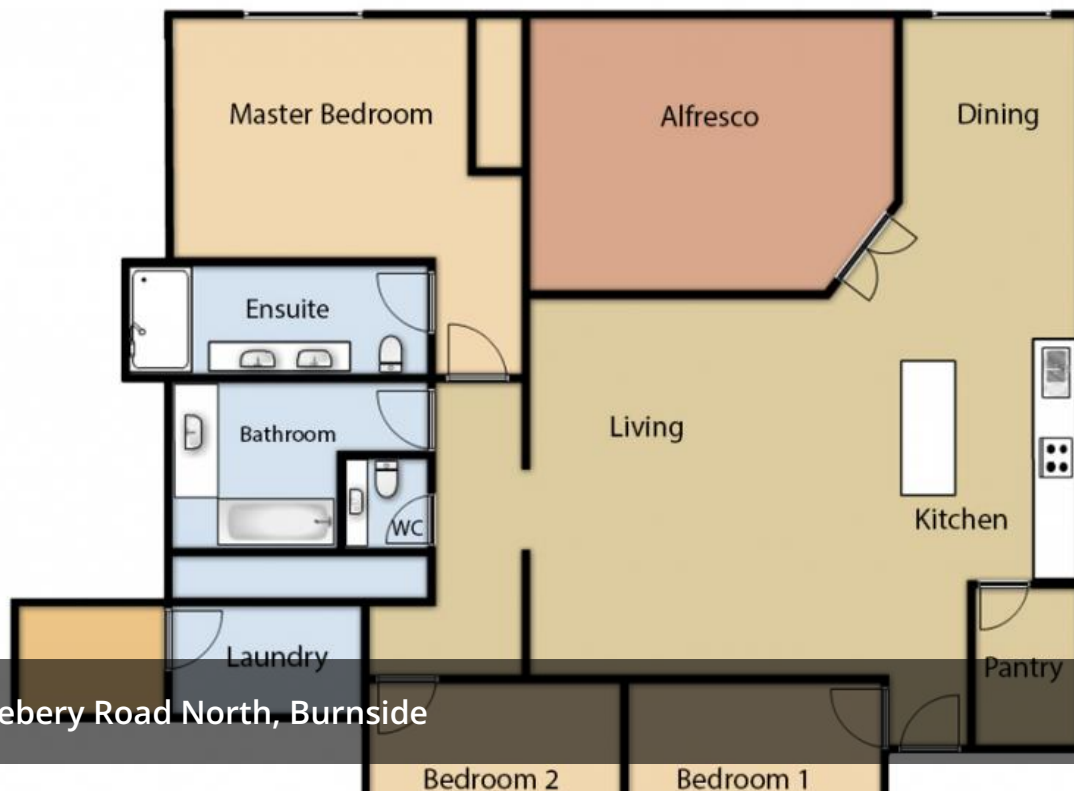


Sold



## REACHING THE HEIGHTS – IMMACULATE FAMILY HOME!

The "Heights Estate" is well known by the locals as the premier location to live. This immaculate 3 bedroom (plus en-suite) home is located in one of Nambour's newest estates and literally minutes from Nambour's CBD, primary & high schools. This superb home is built by the award winning PJ Burns Builders. Complete with quality fixtures throughout providing all the features and comforts you would expect and more. Stylish modern kitchen, huge family room, large en-suite, spacious outdoor entertainment and superb rural views.

- 3 Spacious bedrooms plus en-suite, built-in wardrobes
- Large living area and verandah, Merbau timber deck
- Intelligently designed kitchen with walk-in pantry
- Omega gas cooktop, oven, range-hood, stone benches
- Bosch 26 gas hot water, 10,500 litre water tank
- Quality fixtures and fitting, ceiling fans throughout
- Undercover garage plus parking bay, large 4x3 shed
- Ceiling and floor insulation, termite protection
- Fully fenced backyard – 803m2 block, superb views

This property is definitely the right choice for a growing family that demands high standards and is an equally good rental investment with many Qld health staff requiring quality accommodation close to the hospital. Put this one at the top of the list for Saturday!

🚗 3 🏠 2 🚗 2 📏 803 m2

<b>Price</b>	SOLD
<b>Property Type</b>	Residential
<b>Property ID</b>	1523
<b>Land Area</b>	803 m2

### AGENT DETAILS

Stephen Colasimone - 0413 416 952

### OFFICE DETAILS

Sippy Downs  
 Shop 2B/1 Chancellor Village  
 Boulevard Sippy Downs, QLD, 4556  
 Australia  
 07 5445 6500



*The above information provided has been furnished to us by the vendor/s. We have not verified whether or not that information is accurate and do not have any belief in one way or the other in its accuracy. We do not accept any responsibility to any person for its accuracy and do no more than pass it on. All interested parties should make and rely upon their own inquiries in order to determine whether or not this information is in fact accurate.*