

That's an error.

That's all we know.







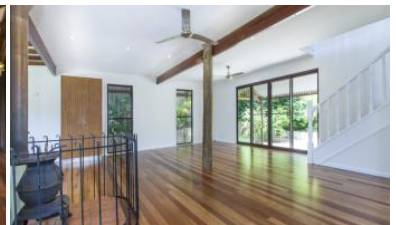
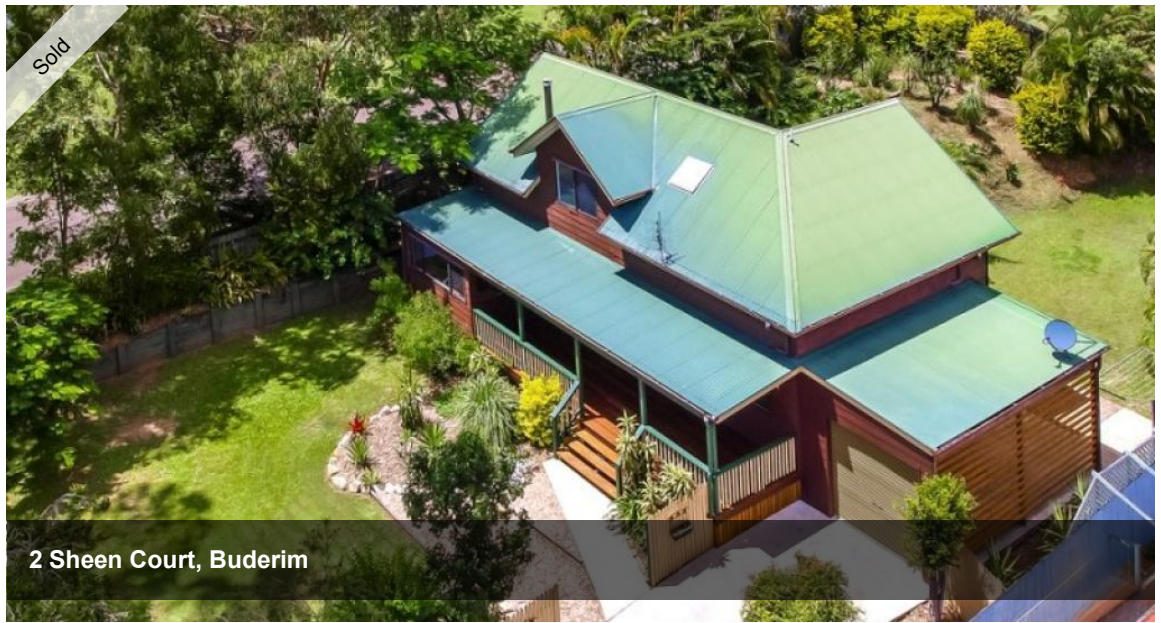












**SOMETHING DIFFERENT, SOMETHING VERY SPECIAL!**

A rare opportunity in a sought after locale!

Buderim Forest is renowned for its fair share of character homes and this one is not going to disappoint! It's a family home with a difference, one for those looking for a combination of character, privacy and space, in a cul-de-sac no less - all just 3 minutes to the Maroochydore CBD.

Freshly refurbished and supremely located, 2 Sheen Ct offers both an exciting or relaxing lifestyle as you see fit, walking distance to Wises farm and within easy reach to all manner of local conveniences.

Set on a very useable 939 square metres of private bliss, neutral tones and plenty of natural light blend perfectly with polished timber floors to create a welcome sense of character and space as soon as you enter this unique family abode.

The floor plan comprises two bedrooms upstairs and two down, with two good size living areas and bathrooms also on each level.

High pitched ceilings upstairs are a beaut feature, while the master bedroom offers a huge walk in robe and private deck overlooking the rear yard and reserve in the distance.

The covered timber front porch is a great first impression of the property and is certain to be an area where much of your time will be spent, particularly in the warmer months. Elevated to capture the breeze it overlooks the front yard where established gardens frame a fenced yard ready and waiting for the addition of a swing set or pool if desired.

If you want the 'same old' maybe it's not for you, one look may change your mind though, you should definitely come through! There is so much on offer at this price.

The local area - Buderim Forest is located opposite Wises Farm, walking distance to Immanuel (pre-school right through to Year 12) for the kids and Immanuel Gardens for the parents, there's a park around the corner and your choice of shops or sporting facilities just down the street. It's a quick 3-5 minutes to the beach, Sunshine Plaza or Buderim Village. Centrally located yet tucked away, just perfect!

A serious sale that won't be on the market for long! Call Wes for further

4 2 1 939 m2

<b>Price</b>	SOLD
<b>Property Type</b>	Residential
<b>Property ID</b>	1614
<b>Land Area</b>	939 m2

**AGENT DETAILS**

Wes Ratcliffe - 0418 733 527

**OFFICE DETAILS**

Sippy Downs  
 Shop 2B/1 Chancellor Village  
 Boulevard Sippy Downs, QLD, 4556  
 Australia  
 07 5445 6500



information or to arrange your inspection today.

*The above information provided has been furnished to us by the vendor/s. We have not verified whether or not that information is accurate and do not have any belief in one way or the other in its accuracy. We do not accept any responsibility to any person for its accuracy and do no more than pass it on. All interested parties should make and rely upon their own inquiries in order to determine whether or not this information is in fact accurate.*