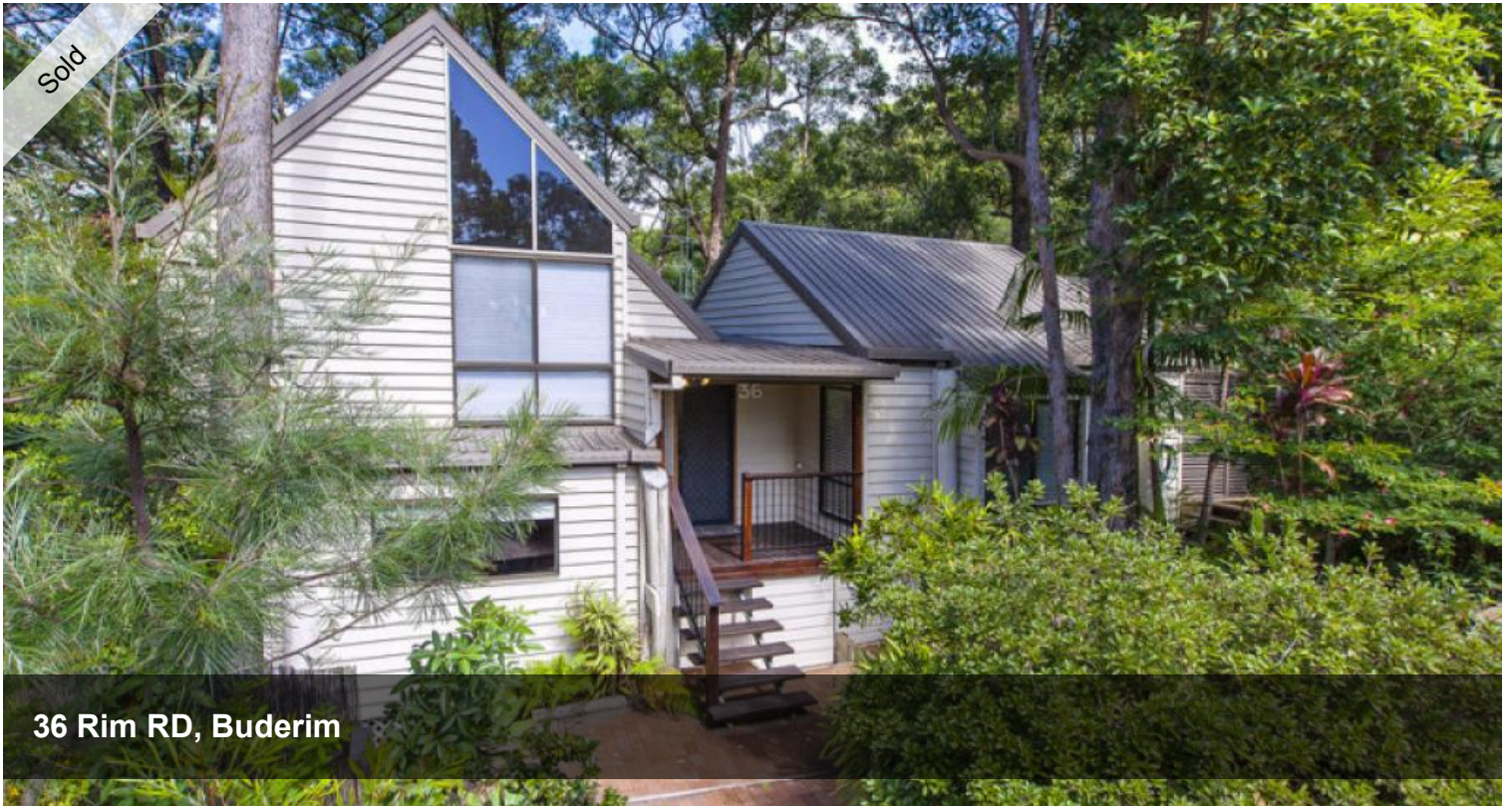


Sold



36 Rim RD, Buderim



## CHARACTER, CONVENIENCE AND PRIVACY!

Set on a 830m2 allotment in the North Eastern foothills of Buderim, this remarkable split level family home will deceive you from the street, but it's a welcome deception!

Refreshingly large it boasts multiple living zones both inside and out, excellent separation of bedrooms and a long list of inclusions that are ready to impress! A unique floor plan offers a real possibility for extended families or those that haven't quite found that property that ticks all their boxes.

It's a home that offers very easy living, seamlessly transitioning from indoors to out, onto the substantial timber verandah that wraps the home on two sides. Perfectly private, elevated to catch the breeze and surrounded by nature - awesome! Many mornings, afternoons and evenings will be spent out here quietly relaxing, loudly entertaining or simply spending time with the family.

Conveniently located close to Immanuel (pre-school right through to Year 12) for the kids and Immanuel Gardens for the parents. It's a quick 5 minutes to your choice of Mooloolaba or Alex beach, Sunshine Plaza or Buderim Village. Centrally located yet very private, a great combination.

Standout features include:

\* 3 good size bedrooms (all offering their very own private patio!!)

🚗 3 🏠 2 🚗 1 📏 830 m2

<b>Price</b>	SOLD
<b>Property Type</b>	Residential
<b>Property ID</b>	1647
<b>Land Area</b>	830 m2

### AGENT DETAILS

Wes Ratcliffe - 0418 733 527

### OFFICE DETAILS

Sippy Downs  
Shop 2B/1 Chancellor Village  
Boulevard Sippy Downs, QLD, 4556  
Australia  
07 5445 6500



- \* More than handy home office/study with distracting views.
- \* Master suite offers air conditioning, large en-suite, walk in robe and private patio
- \* Large internal living zones, separate dining area
- \* Functional kitchen with plenty of bench space and storage
- \* Reverse cycle air conditioning
- \* Private outdoor entertainers area
- \* Fenced yard with space for the swing set or trampoline, and a perfect setting for dad to build a treehouse!
- \* Easy care gardens and covered carport.

If you want the 'same old' maybe it's not for you, one look may change your mind though, you should definitely come through! It won't be the price that stops you becoming the new owner of this one-of-a-kind family home. There is so much on offer at this price!

*The above information provided has been furnished to us by the vendor/s. We have not verified whether or not that information is accurate and do not have any belief in one way or the other in its accuracy. We do not accept any responsibility to any person for its accuracy and do no more than pass it on. All interested parties should make and rely upon their own inquiries in order to determine whether or not this information is in fact accurate.*