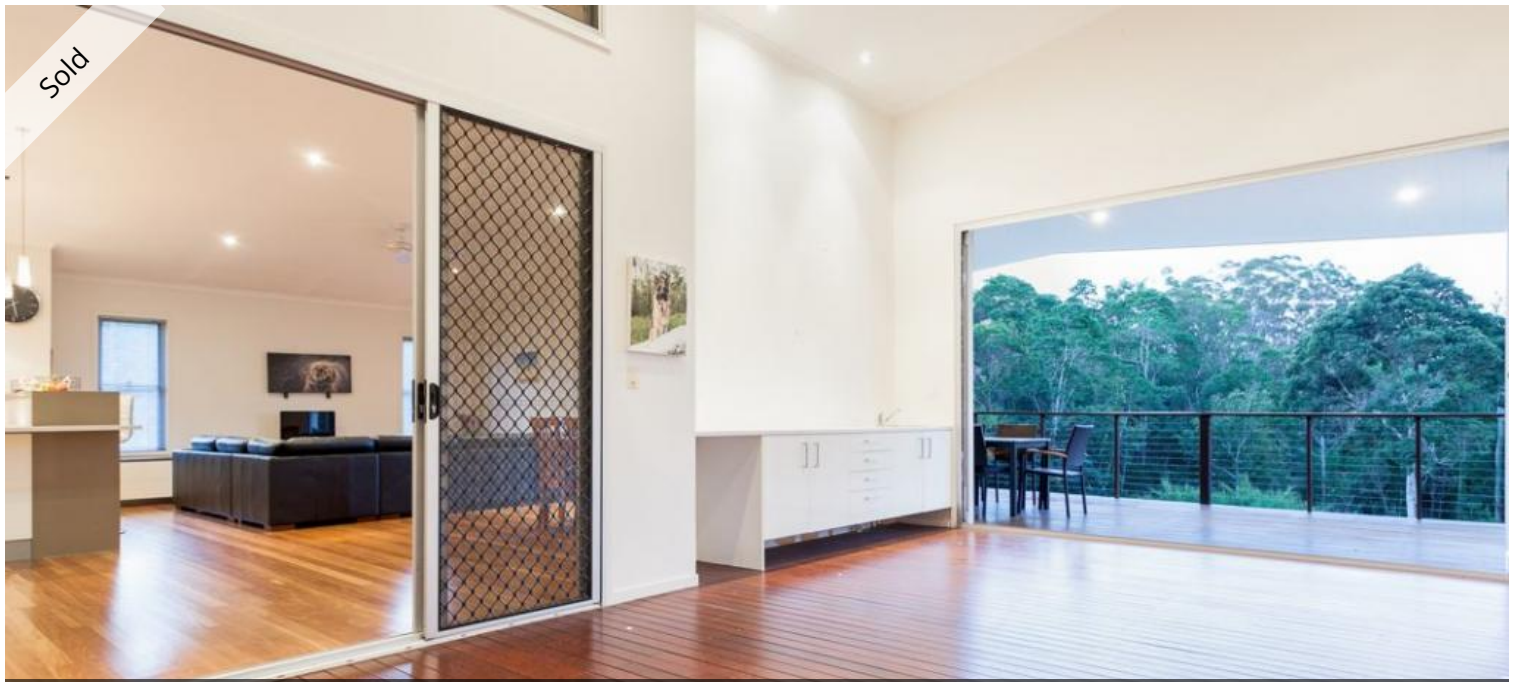


Sold



27 Upper Rosemount Road, Rosemount



## SPECTACULAR LARGE HOME.....ON ACREAGE!

Perfect for a multitude of buyers, whether down - sizing from large acreage or wanting to upsize to a beautiful parcel of land, this property is sure to impress. The spacious home is positioned overlooking the gorgeous dam on approx. 7,247m<sup>2</sup> of land or call it, just under 2 acres. Built in 2010, the home is very modern and some of the highlights are: timber floors, elevated ceilings, stone benchtops, open plan living with fantastic separation with a breezeway going through the home. On one side, there are 4 bedrooms, the main bathroom, separate vanity and oversized family / games room. On the other side, there is the main bedroom that's ensuited, 3rd toilet, home office / study, modern stylish kitchen and the open plan living area. Expansive outdoor entertaining area that captures lovely breezes and provides a gorgeous outlook. The 3 bay barn style shed offers plenty of room with great potential to work from home and caters for additional vehicles and options for a boat, trailer or caravan with an extra high opening. This property comes onto the market with great presentation and priced to sell!

- Stunning modern home with a fantastic layout to move around
- 5 bedrooms, 2 bathrooms, 3 toilets and multiple living areas
- Large family home but is also ideal for dual living/teenagers/guests
- Stylish 2 pak kitchen with stone benchtops is a gourmet chef's delight
- Solar hot water, solar electricity, air conditioning, large water
- Approx. 9m x 9m 3 bay shed with 3 phase power mezzanine level
- Beautiful undulating land of approx. 7,247m<sup>2</sup> of land with dam
- Lovely picturesque setting with abundant wildlife and birdlife to enjoy

🚗 5 🏠 2 🚗 3

Price	SOLD
Property Type	Residential
Property ID	2303

### AGENT DETAILS

Justin Voss - 0400 822 069

### OFFICE DETAILS

Sippy Downs  
Shop 2B/1 Chancellor Village  
Boulevard Sippy Downs, QLD, 4556  
Australia  
07 5445 6500



- Prime prestige location – Close to the coast/hospital/schools/major shopping

Situated in the popular Rosemount area within a short drive to Nambour and the Bruce Highway for easy access down to Brisbane or the airport.

Within approx. 15 minutes to the Sunshine Plaza and Sunshine Coast beautiful beaches.

“Your dream lifestyle property could be here”

*The above information provided has been furnished to us by the vendor/s. We have not verified whether or not that information is accurate and do not have any belief in one way or the other in its accuracy. We do not accept any responsibility to any person for its accuracy and do no more than pass it on. All interested parties should make and rely upon their own inquiries in order to determine whether or not this information is in fact accurate.*