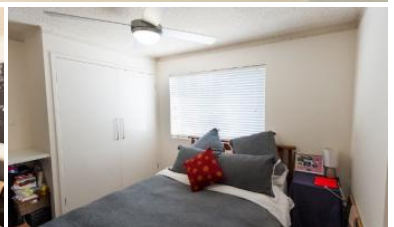


That's an error.

That's all we know.



3, 42 Toorumbee Drive, Mooloolaba



LOW MAINTENANCE IN MAGNIFICENT MOOLOOLABA

Whether you're looking for a new beachside lifestyle, or a well returning investment property to add to the portfolio, this well maintained ground floor Mooloolaba unit is certain to tick a lot of boxes.

One of only five in a solidly built, freshly painted complex with low body corporate fees, this 2 bedroom, 1 bathroom offering enjoys fantastic position in relation to both Mooloolaba and Alexandra Headland beaches, as well as the many cafes and restaurants the area is famous for.

Modernised without a thing to do and with little to no maintenance required, the following features suggest 3/42 Toorumbee Drive represents an outstanding real estate opportunity at an affordable price that won't break the bank.

- Oversized L shaped kitchen with stainless steel splashback
- Spacious open living area
- 2 bedrooms boasting built in wardrobes
- Ceiling fans throughout
- Internal laundry nook
- Complex of only 5 with new roof, and brand new driveway/lock up garage doors
- Recently returning \$350pw
- Close to public transport, Mooloolaba Coles and Emerald Woods shopping complex

Currently vacant and priced to sell, call Drew Isaacs now on 0468 950 301 to arrange a private inspection, or visit one of our scheduled open homes for your chance to secure property in a blue chip Sunshine Coast suburb.

The above information provided has been furnished to us by the vendor/s. We have not verified whether or not that information is accurate and do not have any belief in one way or the other in its accuracy. We do not accept any responsibility to any person for its accuracy and do no more than pass it on. All interested parties should make and rely upon their own inquiries in order to determine whether or not this information is in fact accurate.

2 1 1

Price SOLD
Property Type Residential
Property ID 2395

AGENT DETAILS

OFFICE DETAILS

Sippy Downs
 Shop 2B/1 Chancellor Village
 Boulevard Sippy Downs, QLD, 4556
 Australia
 07 5445 6500

