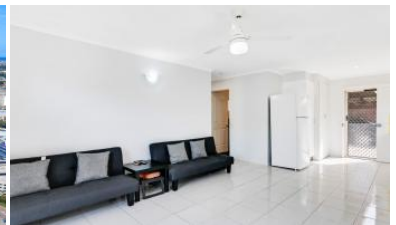


That's an error.

That's all we know.



CENTRALLY POSITIONED WITH BIG YARD, WON'T LAST LONG!!

Ideally located in a boutique complex of six in the centre of Maroochydore, at the end of a cul-de-sac, this ground floor unit comes to the market without a thing to do.

Offering two well sized bedrooms, a modernised kitchen and bathroom, reverse cycle air con, roomy grassed courtyard and single carport with hard to find lockable storage.

Very suitable as an investment with an excellent return coupled with low outgoing, or an ideal first step or downsize into the heart of Maroochydore.

Located a short walk to the Sunshine Plaza and its 320 plus specialty stores and award winning riverwalk boasting countless restaurant and entertainment choices. Close to schools, public transport, a 15 minute walk or easy bike ride to Cotton Tree, the river mouth and surf beach.

Invest in a rapidly developing suburb today and reap the rewards into the future. Contact Wes or Rosie to organise your inspection today!

The above information provided has been furnished to us by the vendor/s. We have not verified whether or not that information is accurate and do not have any belief in one way or the other in its accuracy. We do not accept any responsibility to any person for its accuracy and do no more than pass it on. All interested parties should make and rely upon their own inquiries in order to determine whether or not this information is in fact accurate.

2 1 1

Price SOLD
Property Type Residential
Property ID 2640

AGENT DETAILS

Wes Ratcliffe - 0418 733 527

OFFICE DETAILS

Sippy Downs
 Shop 2B/1 Chancellor Village
 Boulevard Sippy Downs, QLD, 4556
 Australia
 07 5445 6500

