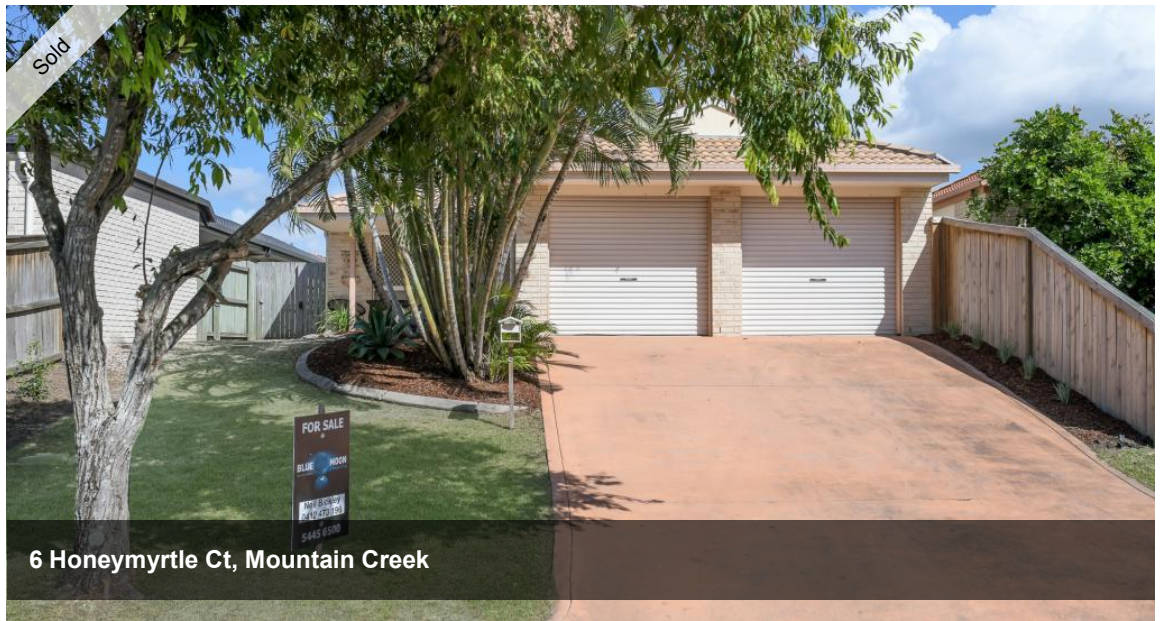


That's an error.

That's all we know.



6 Honeymyrtle Ct, Mountain Creek



LIFE TIME OPPORTUNITY!

Nestled in a quiet cul de sac in the Mountain Creek School zone is the perfect brick and tile house for the first home buyer/new family adventure or the plain investor.

This property boasts 3 double bedrooms, master with ensuite. Second bathroom, open plan kitchen incorporating the family room, separate generous size lounge room and spacious laundry.

Car accommodation, the traditional BIG double lock up garage with internal access. The yard is nicely landscaped with privacy and security, side access also available.

Think about this!

- Mountain Creek School zone
- 3 bedrooms, 2 bathrooms, double lock up garage
- Brick & tile solid home

All this for \$485,000. Contact Neil today to arrange an inspection.

The above information provided has been furnished to us by the vendor/s. We have not verified whether or not that information is accurate and do not have any belief in one way or the other in its accuracy. We do not accept any responsibility to any person for its accuracy and do no more than pass it on. All interested parties should make and rely upon their own inquiries in order to determine whether or not this information is in fact accurate.

3 2 2 406 m2

Price SOLD for \$460,000
Property Type Residential
Property ID 3781
Land Area 406 m2

AGENT DETAILS

Neil Bickley - 0412 473 196

OFFICE DETAILS

Main Beach Mooloolaba
 Unit 1 24 Brisbane Rd Mooloolaba
 QLD 4557 Australia
 0754456500

