

That's an error.

That's all we know.







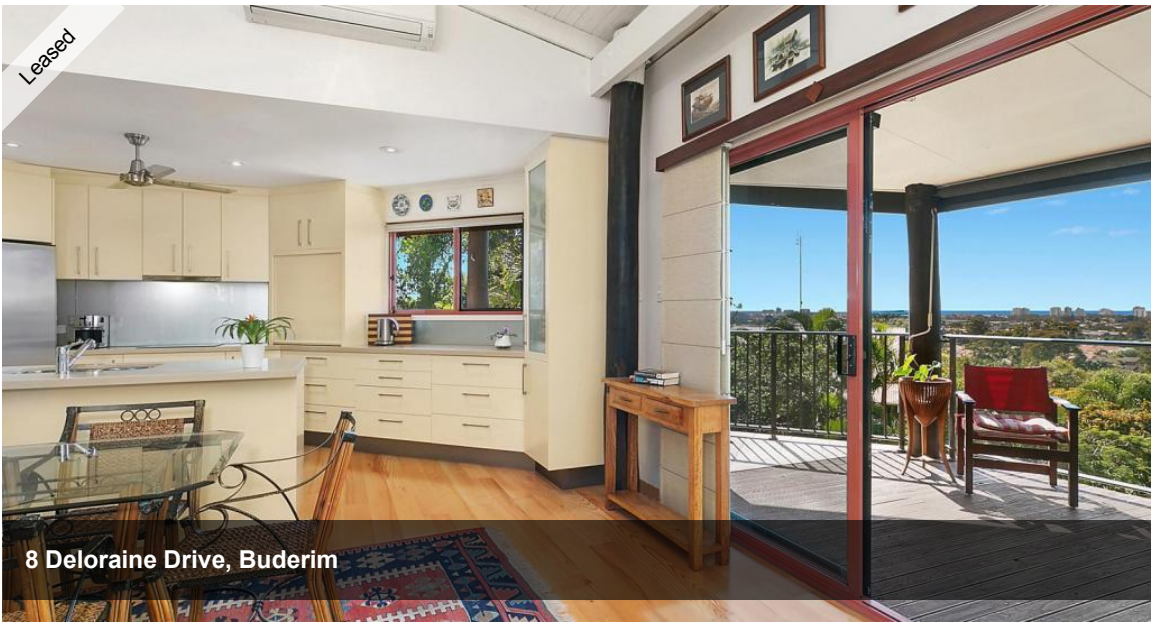












8 Deloraine Drive, Buderim



## FAMILY HOME WITH SENSATIONAL VIEWS

This charming family home offers warm interiors and living zones extending to a choice of timber decks with coastal views. Privately positioned amongst lush, leafy surrounds, it is conveniently located just minutes to the shops, schools & beaches.

The home features:-

- Two north-east facing decks with stunning ocean outlook
- Light-filled interiors include timber floors & raked ceilings
- Open-plan living/dining with easy indoor/outdoor flow
- Reverse cycle air conditioning
- Modern kitchen with stone bench tops & quality appliances
- Generous master with walk in robe and private deck access
- Three bedrooms plus bathroom downstairs
- Brand new carpet throughout
- Second living area downstairs
- Saltwater pool surrounded by established, easy-care gardens
- Double carport
- 4.7kW solar power
- Workshop, abundant storage options
- Monthly pool servicing, tenants to pay for chemicals
- Pets considered on application
- Water charges apply

Contact our office on 07 5445 6500 or email through an enquiry to register for upcoming inspections.

*The above information provided has been furnished to us by the vendor/s. We have not verified whether or not that information is accurate and do not have any belief in one way or the other in its accuracy. We do not accept any responsibility to any person for its accuracy and do no more than pass it on. All interested parties should make and rely upon their own inquiries in order to determine whether or not this information is in fact accurate.*

4 2 2

**Price** \$730 per Week  
**Property Type** Rental  
**Property ID** 3835

### AGENT DETAILS

Joshua Giles - 07 5445 6500

### OFFICE DETAILS

Sippy Downs  
 Shop 2B/1 Chancellor Village  
 Boulevard Sippy Downs, QLD, 4556  
 Australia  
 07 5445 6500

