

That's an error.

That's all we know.







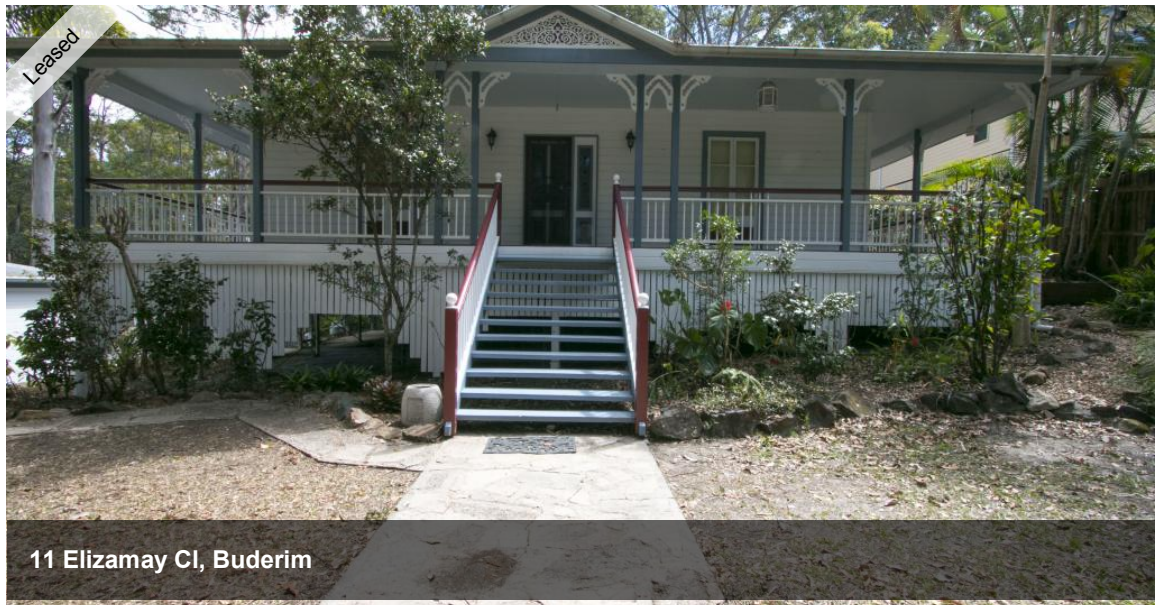












### PRIVATE 1/2 ACRE BUSHLAND

Situated in the quiet and peaceful Eliza May Close (access off Dixon Road) on a large block with surrounding bush land. Wake up to kangaroos having a rest on the front lawn and listen to the birds high up in the trees. This property has been maintained immaculately by the same owners for 14 years who have worked hard to keep it in its current condition. With 3 well sized bedrooms, 2 bathrooms, open dining space and a separate living room. This property will not be available for long.

#### Features:

- Double lock up garage separate to the house
- Outdoor area that backs onto bushland
- Separate living room
- Timber floors
- Renovated ensuite

\*Property is water efficient, usage charges will apply

\*Sorry no pets

Please contact our office on 5445 6500 to arrange a suitable inspection time.

*The above information provided has been furnished to us by the vendor/s. We have not verified whether or not that information is accurate and do not have any belief in one way or the other in its accuracy. We do not accept any responsibility to any person for its accuracy and do no more than pass it on. All interested parties should make and rely upon their own inquiries in order to determine whether or not this information is in fact accurate.*

3 2 2

**Price** \$600 per week  
**Property Type** Rental  
**Property ID** 4111

#### AGENT DETAILS

Charli Cailles - 07 5445 6500

#### OFFICE DETAILS

Sippy Downs  
Shop 2B/1 Chancellor Village  
Boulevard Sippy Downs, QLD, 4556  
Australia  
07 5445 6500

