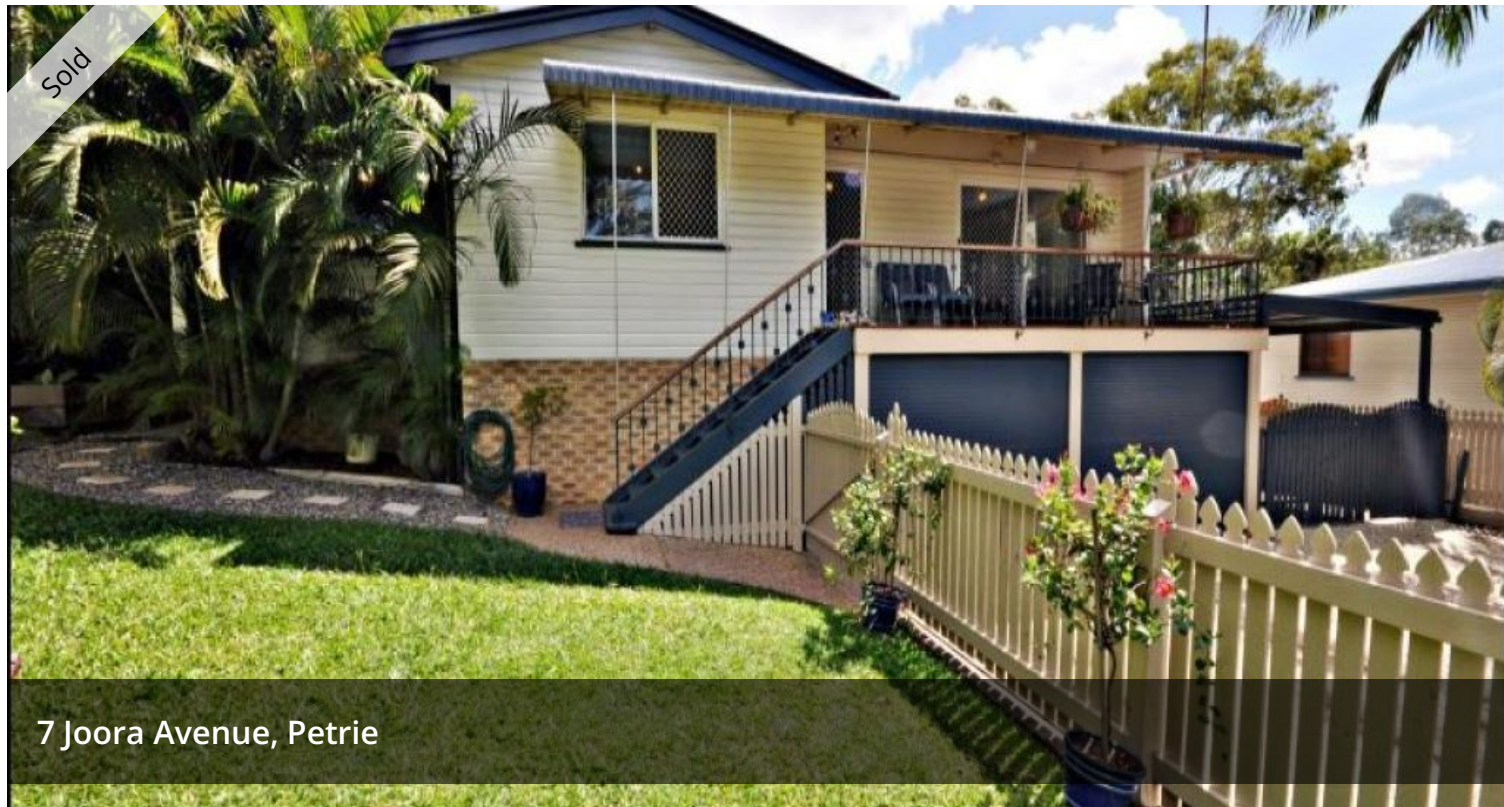


Sold



7 Joora Avenue, Petrie



## LEAFY PETRIE VILLAGE

This lovely highset home is located in a very pretty area of Petrie and is within walking distance to Petrie Primary school and is also walking distance to Petrie Railway Station.

Situated on a large 799sqm block in beautifully tree-lined street this home has 3 large bedrooms all with built-in wardrobes, side access for boat or caravan with a double lock-up garage and a double car carport. It has modern kitchen and separate living and dining areas overlooking the front deck which has been recently updated.

Downstairs is the laundry adjacent to a large storage area with cupboards, perfect for storage of camping gear etc. A large workshop/storage area is located beside the two car lock-up accommodation and also features cupboards & bench,

The backyard has its own micro-climate being on the right side of the hill to capture lovely shade in the afternoon and the winter sun in the morning. You will always enjoy the sea breezes through the day here. Everything has been thoughtfully planned to make the most of this large block.

The property features well established and low maintenance gardens front and back

🚗 3 🏠 1 🚗 4 📏 799 m2

Price	SOLD
Property Type	Residential
Property ID	4557
Land Area	799 m2

### AGENT DETAILS

Nigel Lucas - 0413 351 603

### OFFICE DETAILS

North Lakes  
SHOP 15 9 Discovery Dr North  
Lakes, QLD, 4509 Australia  
0413351603



799sqm block with side access  
Fully fenced yard  
Walk to Petrie Primary School (300m)  
Walk to Woolworths (600m)  
Walk to Petrie Rail Way Station (800m)  
4 car accommodation  
Air-conditioned living area  
3 bedrooms with TV points  
3m x 3m Colourbond garden shed  
Lots of storage cupboards & workshop

A fabulous place to live!

*The above information provided has been furnished to us by the vendor/s. We have not verified whether or not that information is accurate and do not have any belief in one way or the other in its accuracy. We do not accept any responsibility to any person for its accuracy and do no more than pass it on. All interested parties should make and rely upon their own inquiries in order to determine whether or not this information is in fact accurate.*