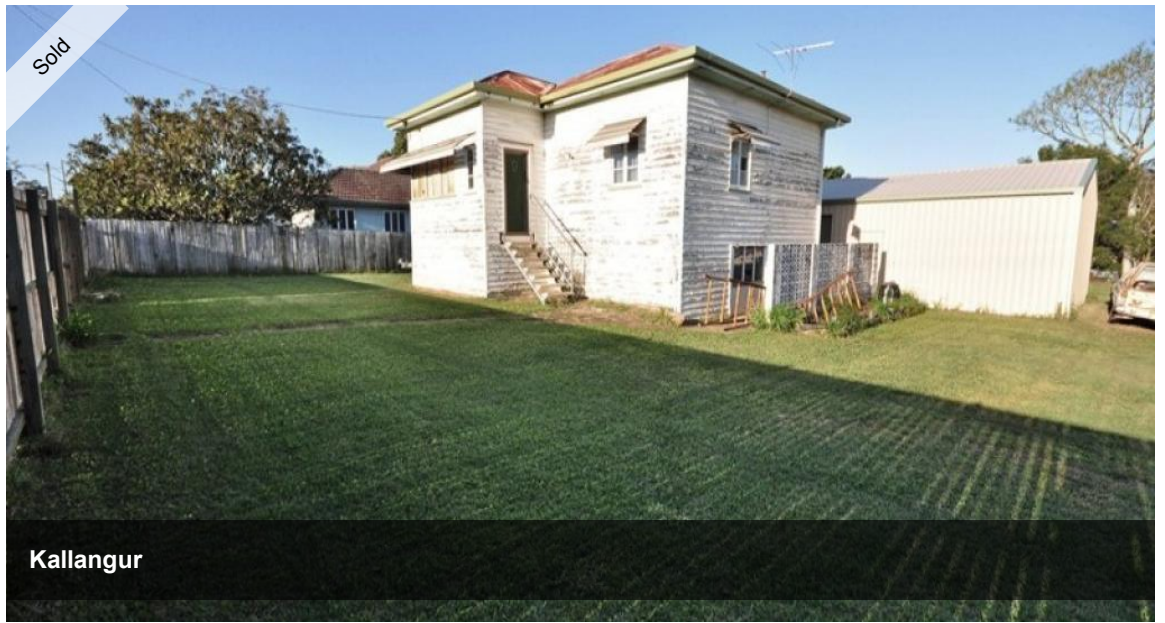


That's an error.

That's all we know.

Sold



Kallangur



2,200SQM BLOCK OF POTENTIAL

Lots of potential here for sub-dividing with 2 street access. This huge block has a 2 bedroom house with a 3 bay shed + 2 bay carport. You might want to renovate the house if you are in need of storage sheds or you might need to park machinery or trucks.

You might want to sub divide the block into house blocks. Plenty of options available with the location walking distance to Petrie Railway Station and the proposed Petrie University.

- 2,200sqm block
- Potential to sub-divide
- 2 bedroom home
- 3 bay shed with 2 bay carport
- 2 street access
- Walk to Petrie Railway Station
- Walk to the proposed Petrie University

The above information provided has been furnished to us by the vendor/s. We have not verified whether or not that information is accurate and do not have any belief in one way or the other in its accuracy. We do not accept any responsibility to any person for its accuracy and do no more than pass it on. All interested parties should make and rely upon their own inquiries in order to determine whether or not this information is in fact accurate.

3 1 5 2,200 m2

Price	SOLD
Property Type	Residential
Property ID	4604
Land Area	2,200 m2

AGENT DETAILS

Nigel Lucas - 0413 351 603

OFFICE DETAILS

North Lakes
SHOP 15 9 Discovery Dr North
Lakes, QLD, 4509 Australia
0413351603

