

That's an error.

That's all we know.











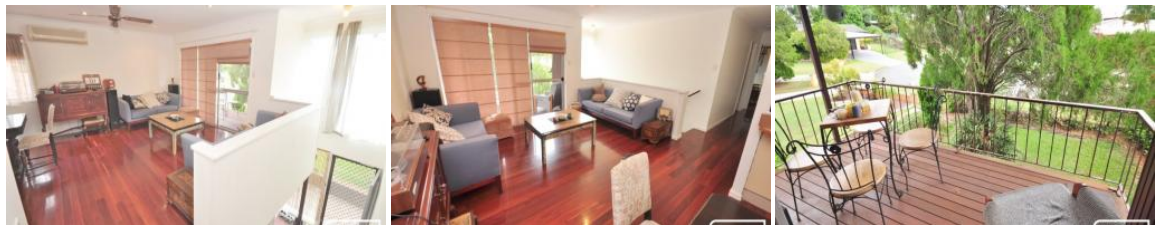








5 Sylvan Court, Kallangur



**KALLANGUR HIGHSET WITH INTERNAL STAIRS**

3 1 2 607 m2

This 3 bedroom home is located in an area less than 1500m from the new Kallangur Railway Station and is just over 200m to the Bus Stop. This location will benefit from the opening of the new rail project, the expansion of the Westfield at North Lakes and the building of the proposed University at Petrie.

<b>Price</b>	SOLD
<b>Property Type</b>	Residential
<b>Property ID</b>	4615
<b>Land Area</b>	607 m2

The house has internal stairs and is situated on a 607sqm block in a quiet cul-de-sac close to all amenities. There are lovely timber floors and a front balcony off the living area. The downstairs utility area has kitchenette and rumpus area plus 2 garages.

**AGENT DETAILS**

Nigel Lucas - 0413 351 603

The backyard is fully fenced and has 2 garden sheds. This is a great sized family backyard with access through the drive through garage.

**OFFICE DETAILS**

North Lakes  
 SHOP 15 9 Discovery Dr North  
 Lakes, QLD, 4509 Australia  
 0413351603

- 3 Bedrooms
- Built –in downstairs
- 2 toilets
- 1500m to Kallangur Railway Station
- 200m to bus stop



*The above information provided has been furnished to us by the vendor/s. We have not verified whether or not that information is accurate and do not have any belief in one way or the other in its accuracy. We do not accept any responsibility to any person for its accuracy and do no more than pass it on. All interested parties should make and rely upon their own inquiries in order to determine whether or not this information is in fact accurate.*