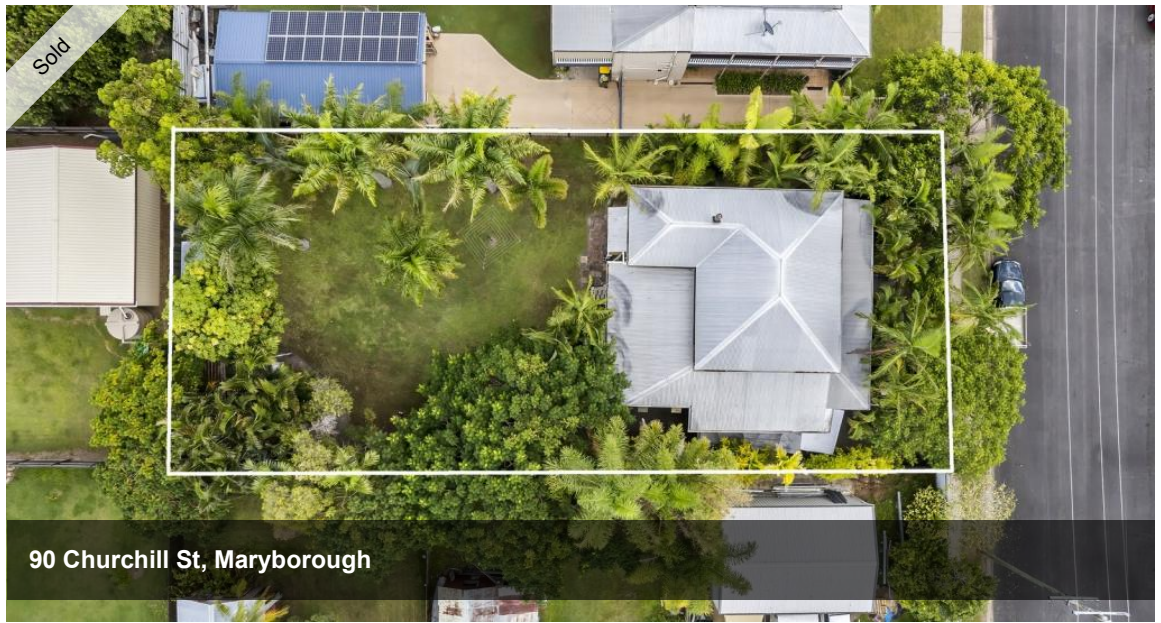


That's an error.

That's all we know.



90 Churchill St, Maryborough



BEAUTIFUL HIGH SET QUEENSLANDER

This 3 bedroom 1 bathroom Queenslander has been beautifully kept and sits on a private 936sqm allotment.

Boasting all the hallmark qualities of a classic Queenslander including high ceilings, VJ walls, polished floors and front deck but with modern upgrades this property is a must to inspect!

This property features:

- 3 generous sized bedrooms
- ceiling fans throughout
- A very spacious modernized kitchen which still maintains the attractive timber features
- Polished floors throughout the living areas and bedrooms
- Enclosed fireplace in the living area
- A neatly renovated bathroom and separate toilet (2 toilets in total)
- A private and leafy front deck
- Separate and renovated laundry downstairs
- Legal height under the house to allow for it to be built in if desired
- Heaps of under house storage or parking
- A fully fenced yard, loads of back yard to build a shed but complete with a small garden shed already.

Currently tenanted at \$330pw through to November 2022 with excellent tenants in place this would make a great addition to any investment portfolio and needs to be inspected to be fully appreciated.

Phone Justen Tillman from Blue Moon Property to arrange a private viewing.

The above information provided has been furnished to us by the vendor/s. We have not verified whether or not this information is accurate and do not have any belief in one way or the other in its accuracy. We do not accept any responsibility to any person for its accuracy and do no more than pass it on. All interested parties should make and rely upon their own inquiries in order to determine whether or not this information is in fact accurate.

3 1 2 936 m2

Price SOLD for \$415,000
Property Type Residential
Property ID 5236
Land Area 936 m2
Floor Area 179 m2

AGENT DETAILS

Justen Tillman - 0412262325

OFFICE DETAILS

Maryborough
 247 Adelaide St Maryborough, QLD,
 4650 Australia
 0741222233

