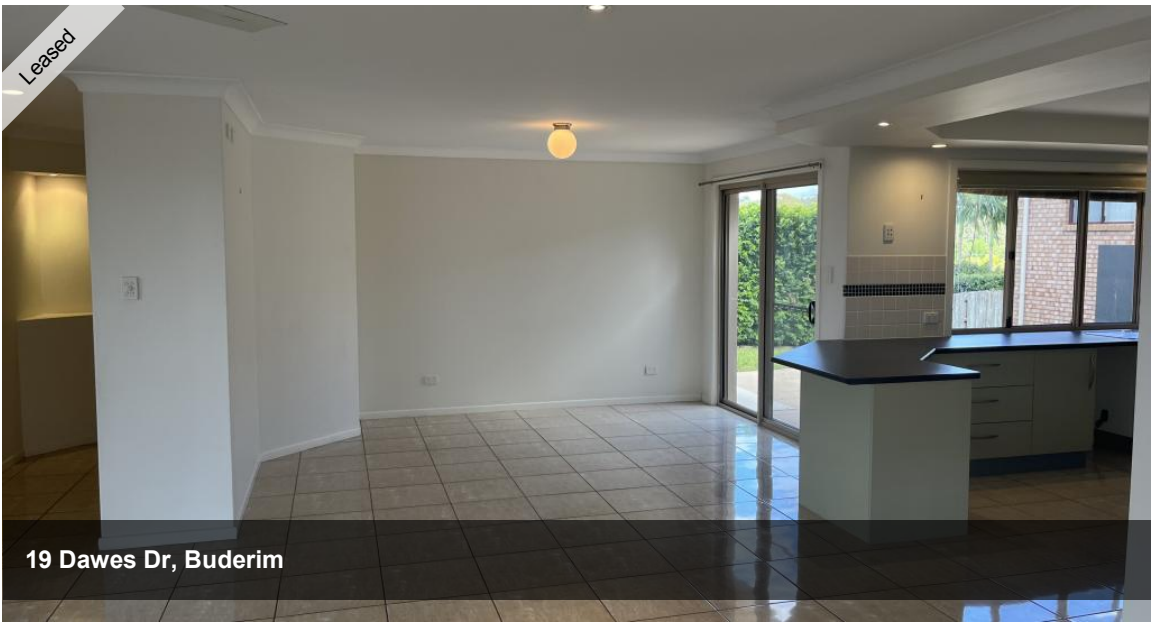


That's an error.

That's all we know.



19 Dawes Dr, Buderim



BUDERIM SPACIOUS FAMILY HOME

Contemporary 4 bedroom spacious Buderim home set amongst quality houses on the high side of a popular estate. Great view from the covered deck. The design is open plan with a tiled living area and the main bedroom has an ensuite. Large spacious kitchen equipped with a brand new dishwasher. There are fans throughout and an automatic double lockup garage.

- Brand new carpet
- Freshly painted throughout
- Air conditioning
- New dishwasher installed.

This home has great access to the Mooloolaba Motorway, Buderim Village, Mountain Creek shops, Public and Private schools, sporting fields and the beaches are all close by. Property is 3 wels water rated - tenant to pay for water consumption. Pets on application, property is not fully fenced.

The above information provided has been furnished to us by the vendor/s. We have not verified whether or not that information is accurate and do not have any belief in one way or the other in its accuracy. We do not accept any responsibility to any person for its accuracy and do no more than pass it on. All interested parties should make and rely upon their own inquiries in order to determine whether or not this information is in fact accurate.

4 2 2

Price	Contact Agent
Property Type	Rental
Property ID	5556

AGENT DETAILS

Kerryn Benton - 0754456500

OFFICE DETAILS

Sippy Downs
Shop 2B/1 Chancellor Village
Boulevard Sippy Downs, QLD, 4556
Australia
07 5445 6500

