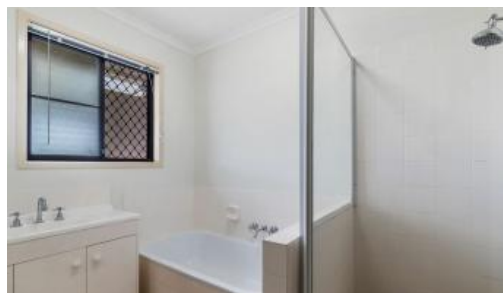
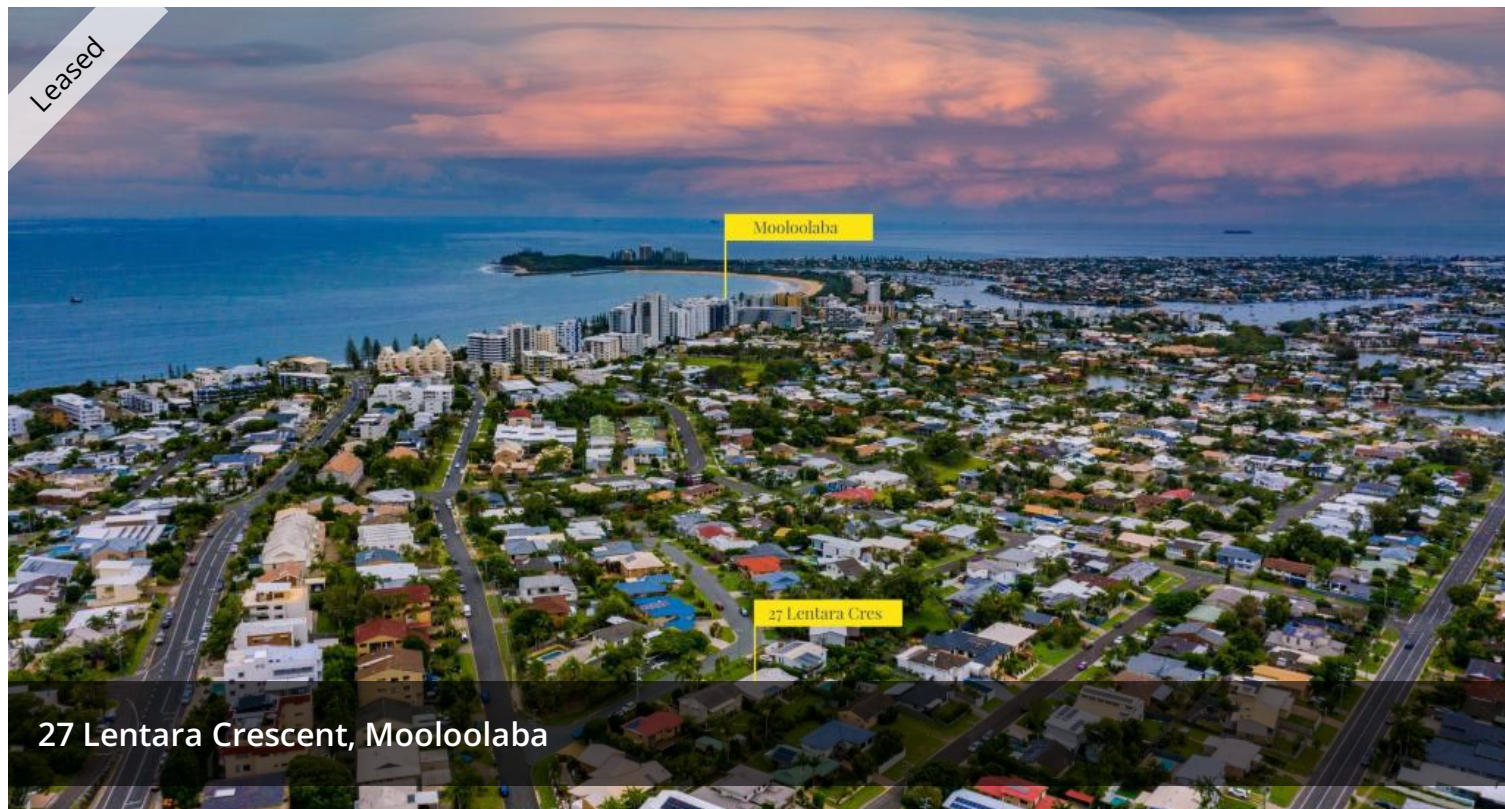


Leased



## RECENTLY RENOVATED BEACHSIDE HOME

27 Lentara Crescent is located in a prime position just minutes from the sandy shores of Alexandra Headland and Mooloolaba beaches. The property is also walking distance to local convenience stores and the infamous 'Velo Project' café.

Also featuring:

6 month old kitchen

New vinyl planking throughout

Ceiling fans throughout

Great separation between bedrooms with converted 'studio' featuring a bedroom and bathroom

Three additional bedrooms

Main bathroom

Air conditioning in living area

Contact Blue Moon Property on 07 5445 6500 to arrange a viewing.

*The above information provided has been furnished to us by the vendor/s. We have not verified whether or not that information is accurate and do not have any belief in one way or the other in its accuracy. We do not accept any responsibility to any person for its accuracy and do no more than pass it on. All interested parties should make and rely upon their own inquiries in order to determine whether or not this information is in fact accurate.*

 4  2  2

<b>Price</b>	\$750 per week
<b>Property Type</b>	Rental
<b>Property ID</b>	5881

## AGENT DETAILS

Indiana Voss - 0404 155 581  
Blue Moon Rentals - 0754456500

## OFFICE DETAILS

Sippy Downs  
Shop 2B/1 Chancellor Village  
Boulevard Sippy Downs, QLD,  
4556 Australia  
07 5445 6500

