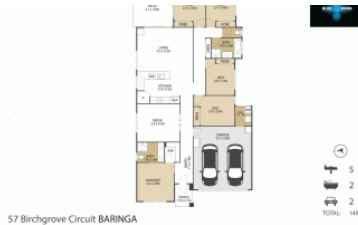


That's an error.

That's all we know.



57 Birchgrove Cct, Baringa



THE BOLD AND THE BEAUTIFUL

Welcome to your opportunity to purchase this low set five-bedroom home that is immaculately presented with plenty of street appeal and located within the highly sought after and admired Elements Estate Enclave. A location ideally positioned alongside beautiful forest and bushland and designed to harmonize with its natural surroundings.

The home is nestled on a generous block of 501m2 with gated side access and a fenced backyard and surrounded by other high quality and modern homes in this cleverly built estate.

The Elements Estate has been subject to careful community planning and guidelines ensuring use of raw building materials and a high level of landscaping to enhance the neighborhood's natural beauty with tree-lined streets, manicured paths and views to Glass House Mountains.

The City of Aura both current and emerging has so much to offer including parks, playgrounds, vibrant shopping centres and a choice of schools all at your fingertips.

Features of the home include

- Open plan tiled living and dining space that is air-conditioned
- Dedicated media room ideal for movie nights in
- Dream kitchen with oversized gas cooker, stone benches, stainless steel dishwasher and plenty of storage
- 5 spacious bedrooms all with built in robes and ceiling fans
- Air-conditioned master bedroom with ensuite and his and hers basins
- Family bathroom with separate bath and shower
- Generous outdoor undercover alfresco area at the rear
- Double lock up garage with internal access
- Water tanks and garden shed
- Fully fenced with low maintenance gardens and yard
- Gated side access

5 2 2 501 m2

Price SOLD for \$880,000
Property Type Residential
Property ID 5899
Land Area 501 m2

AGENT DETAILS

Steve Venn - 0418 288 325

OFFICE DETAILS

Golden Beach
 SHOP 2 50 Landsborough Pde
 Golden Beach, QLD, 4551 Australia
 0418 288 325



- Quality fixtures and fittings, fully screened plus ceiling fans throughout

This stunning home offers something for everyone in the family and located just minutes from every amenity one requires including the Baringa Shopping Village, cafes and restaurants.

Spend your weekend exploring the parks, playgrounds, cycling and walking tracks.

Living at The Elements means you will have access to some wonderful outdoor recreational spaces including the 10-hectare recreational park within walking distance of your home.

A standout feature of the Aura community masterplan is the placement of a park within 400m of every home! The Baringa Forest Park is one of the latest additions to the park network and features state-of-the-art playground equipment including a giant 8-metre climbing tower and a flying fox!

Share your enviable lifestyle with family and friends taking advantage of the picnic shelters, barbeques and toilets available to ensure the best day out.

Close proximity to Baringa State School and Unity College and easy access to the Bruce Highway South to Brisbane or North to Noosa.

Imagine living less than 10klms from some of the best beaches the Sunshine Coast has to offer with the surf at Kings Beach or the calm waterways of the Pumicestone Passage at Golden Beach.

With so much to offer we recommend you don't delay your enquiry and place this one on top of your inspection list!

The above information provided has been furnished to us by the vendor/s. We have not verified whether or not that information is accurate and do not have any belief in one way or the other in its accuracy. We do not accept any responsibility to any person for its accuracy and do no more than pass it on. All interested parties should make and rely upon their own inquiries in order to determine whether or not this information is in fact accurate.