

That's an error.

That's all we know.













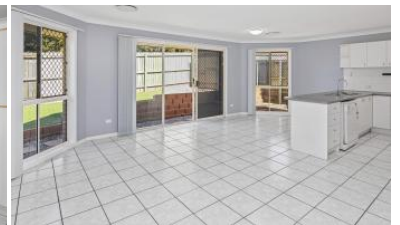




Sold



7 Esk Place, Kallangur



## FRESH TO THE KALLANGUR MARKET

Spacious, segregated and boasting modern colour schemes in a location that comprises of comfort, convenience and lifestyle.

In a beautiful welcoming neighbourhood, offering well maintained homes, I am proud to present this Gorgeous home.

In a quiet cul-de-sac, this property wont last long.

- 4 bedrooms of decent size, with built in robes and ceiling fans
- Master bedroom complete with a walk in robe and private ensuite
- Kitchen is loaded with quality appliances including a dishwasher, gas cook top and oven with decent bench space.
- Outdoor alfresco dining and multiple indoor living areas ensuring that everyone has their own space
- 5kw Solar System
- Ducted air conditioning through all rooms with My Air Smart Home tablet
- New carpets, screens & vertical blinds & Fresh Paint
- New Synthetic grass in the backyard.
- Low maintenance gardens
- Separate indoor laundry
- Close to shops, bus & rail transport & entertainment

Take in the outdoors with all the greenery, low maintenance backyard laid with artificial turf with a nice cool outdoor entertaining area. Close to the Pine River (for boating) and close to Sunshine Coast. There is a Coles down the road and the home is close to the railway if you wanted to go into town.

Book your inspection today.

See you at the Open Home!

*The above information provided has been furnished to us by the vendor/s. We have not verified whether or not that information is accurate and do not have any belief in one way or the other in its accuracy. We do not accept any responsibility to any person for its accuracy and do no more than pass it on. All interested parties should make and rely upon their own inquiries in order to determine whether or not this information is in fact accurate.*

4 2 2 400 m2

|                      |             |
|----------------------|-------------|
| <b>Price</b>         | SOLD        |
| <b>Property Type</b> | Residential |
| <b>Property ID</b>   | 6253        |
| <b>Land Area</b>     | 400 m2      |

### AGENT DETAILS

Aimee Marsh - 0435100443

### OFFICE DETAILS

Griffin  
0435100443

