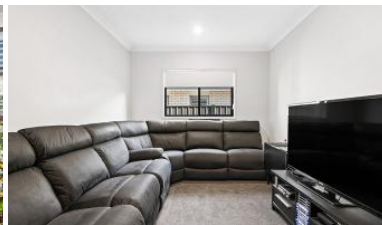


That's an error.

That's all we know.



88 Shoreview Boulevard, Griffin



FRESH TO THE GRIFFIN MARKET - FIRST TIME FOR SALE

Only minutes to the Griffin Waterfront, this home will not last long!

Spacious, segregated and boasting modern colour schemes in a location that comprises of comfort, convenience and lifestyle.

This 4 bedroom home offers bedrooms of great size, with built in robes and ceiling fans. with the master bedroom complete with air conditioning, a walk thru robe and private ensuite.

The kitchen is fitted with quality appliances including a dishwasher, gas stove and oven with stone benchtops also offering a walk in butlers pantry overlooking the outdoor area. The afresco area overlooks the nearby nature reserve and offers great privacy with no back neighbours.

Capture the beautiful bay breezes, drop in a fishing line down the waterfront, or take a short drive to Northlakes shopping centre just minutes from your brand new home.

Why not meet friends for a coffee at the local "Rocks Cafe" after you drop off the kids to one of the areas most sought after schools. Take out the boat, go for a run on the waterfront or jump on the nearby highway and drive to the coast or roll into the CBD.

With many amenities surrounding and natural bushlands, homes in this location are being snapped up fast. Take advantage of the buyer grants in place. For the savvy investor or a family looking for the perfect place to call home.

Turning dreams into reality in one of the greatest growth corridors on the north side of Brisbane.

Book your inspection today!

The above information provided has been furnished to us by the vendor/s. We have not verified whether or not that information is accurate and do not have any belief in one way or the other in its accuracy. We do not accept any responsibility to any person for its accuracy and do no more than pass it on. All interested parties should make and rely upon their own inquiries in order to determine whether or not this information is in fact accurate.

4 2 2 381 m2

Price	SOLD
Property Type	Residential
Property ID	6276
Land Area	381 m2

AGENT DETAILS

Aimee Marsh - 0435100443

OFFICE DETAILS

Griffin
0435100443

