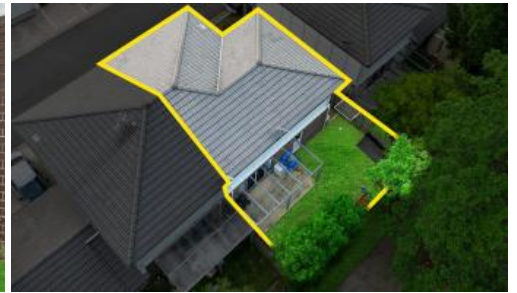


Sold



13, 1-49 Lavender Drive, Griffin



## FIRST TIME FOR SALE

Situated in the heart of Griffin and only a short 10-minute drive to Northlakes Westfield, this townhouse won't last long.

Located within 2 minutes highway access also.

With electric cooking appliances, ample benchtop space and dishwasher, cooking is made easy in this well-rounded kitchen! Additionally, a separate laundry is tucked away through the garage. There is also a 3rd toilet downstairs for convenience.

Upstairs features 4 large bedrooms and the main bathroom. The master bedroom is complete with an ensuite with air conditioning, and all rooms have built-in wardrobes and ceiling fans! The unit has its own private small back yard and patio for entertaining family and friends which is super low maintenance.

### Features

- Spacious townhouse with low maintenance yard
- Large bedrooms all with built in robes and ceiling fans
- Air-conditioned living area & Master Bedroom
- Very usable kitchen with plenty of cupboards and bench space, dishwasher and gas appliances
- Private courtyard with patio for outdoor entertaining
- Close to local Schools, Shops, Medical Centres and Public Transport
- Close to Westfield North Lakes, Ikea, Costco

🚗 4 🏠 2 🚗 2 📏 149 m2

Price	SOLD
Property Type	Residential
Property ID	6302
Land Area	149 m2

### AGENT DETAILS

Aimee Marsh - 0435100443

### OFFICE DETAILS

Griffin  
0435100443



- A short drive to Redcliffe peninsula
- Approximately 1 hour to the Sunshine Coast
- Approximately 15 minutes to the airport
- Approximately 40 minutes to Brisbane CBD

*The above information provided has been furnished to us by the vendor/s. We have not verified whether or not that information is accurate and do not have any belief in one way or the other in its accuracy. We do not accept any responsibility to any person for its accuracy and do no more than pass it on. All interested parties should make and rely upon their own inquiries in order to determine whether or not this information is in fact accurate.*