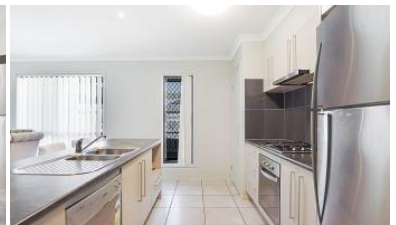


That's an error.

That's all we know.



4 Elderflower Circuit, Griffin



WELCOMING 4 ELDERFLOWER CIRCUIT TO THE MARKET

FIRST TIME FOR SALE

Are you a young family, first home buyer or savvy investor looking to add to the portfolio?

Look no further!

This quaint low-set home is everything you have been looking for and more!

Spread out over a practical floor-plan, this immaculate home is perfect for someone who is looking for a low maintenance living solution. Here is your opportunity to purchase a home that is move in ready and ready to be enjoyed.

When searching for the perfect "set and forget investment" or entering the property market for the first time, attributes such as location, convenience and low maintenance are always high on your list.

This home fulfils all your wants and needs with close proximity to schools, transport and shopping all wrapped up and a short drive to Westfield Northlakes & IKEA.

This well presented four bedroom home with a second living area features a great open kitchen with island bench and sink, gas cooking and genuine size pantry.

The master bedroom is well positioned at the rear of the property with a walk-in robe & ensuite

The home consists of security screens, a separate toilet, main bathroom servicing 2 of the other large bedrooms, along with ceiling fans throughout for comfort on those warm summer days. The home is air conditioned to the main open plan living area and boasts not only a generous living room, but an additional separate formal lounge allowing space for anyone with children. This spacious dining coupled with a wonderful entertainment area flowing from the kitchen caters for a comfortable lifestyle.

Features

- Master Bedroom with walk in robe and ensuite
- 3 further bedrooms all with built-in wardrobes
- Open plan living with split system air conditioning which flows out to the alfresco area

4 2 2

Price SOLD
Property Type Residential
Property ID 6307

AGENT DETAILS

Aimee Marsh - 0435100443

OFFICE DETAILS

Griffin
0435100443



- Well-appointed kitchen with gas stove and dishwasher
- Fully fenced 441m2 yard perfect for the kids or fur babies to run around and play with tank water and garden shed
- Separate internal laundry with access to the clothesline
- Double lock up garage with internal access
- Close to schools, shops, & public transport, Westfield Northlakes & IKEA

The above information provided has been furnished to us by the vendor/s. We have not verified whether or not that information is accurate and do not have any belief in one way or the other in its accuracy. We do not accept any responsibility to any person for its accuracy and do no more than pass it on. All interested parties should make and rely upon their own inquiries in order to determine whether or not this information is in fact accurate.